

BQ BEATRICE QUARTERS

OMOTESANDO 表参道

表
参
道



CHEF'S RECOMMENDATION

* Pictures are for illustrations only

* Prices are excluding tax and service charge

BQ SUPER SAVER

50.000

SAVE UP TO 43.000



75.000

SAVE UP TO 41.000





APPETIZER 前菜



🍷 **SHIOZUKE DORI**
Rp.17.000



HONEY GARLIC WINGS
Rp.27.000



FISH & CHIP
Rp.22.000



🍷 **TRUFFLE SHIMEJI**
Rp.29.000

TOKIO GOULASH トキオ ガウラッシュ



CHICKEN
Rp.63.000



🍷 **DORI**
Rp.69.000



HOKUBEE BEEF
Rp.79.000

OLIVE PLATTER オリーブの食べ物



🍷 **BUTTERMILK FRIED CHICKEN**
Rp.65.000



JOHN DORY WITH MENTAIKO SAUCE
Rp.75.000



🍷 **HOKUBEE BEEF WITH TERIYAKI SAUCE**
Rp.89.000

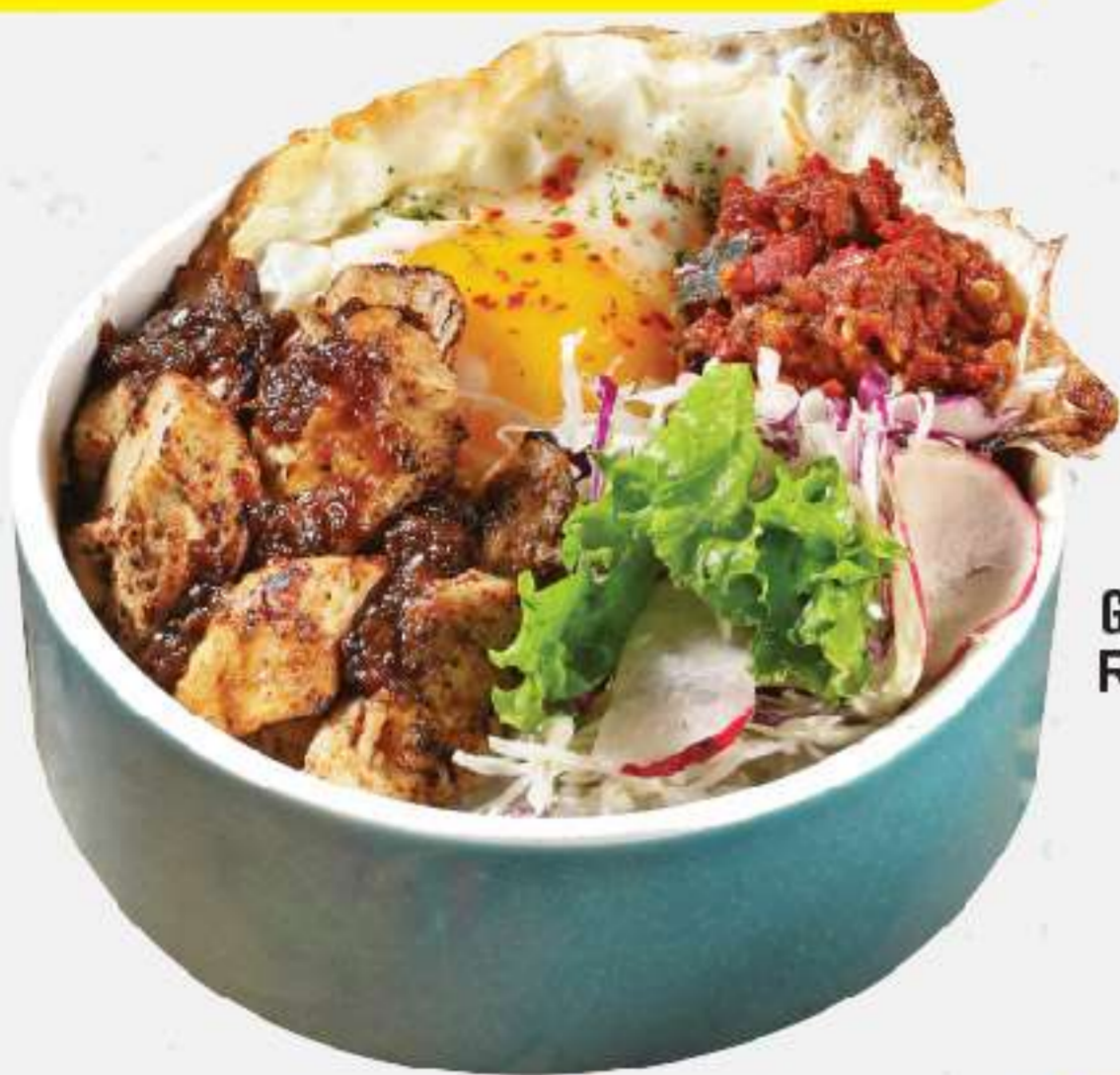


🍷 **PAN SEARED SALMON WITH MENTAIKO**
Rp.89.000





SPICY BOWL スパイシー ボール



GRILLED CHICKEN
Rp.33.000



SPICY TUNA
Rp.39.000



AYAM BUMBU BALI
Rp.39.000



CHICKEN THAI
Rp.39.000



BEEF RENDANG
Rp.45.000

CHOOSE YOUR LEVEL OF SPICENESS :
 ♪ LEVEL 1 ♪♪ LEVEL 2 ♪♪♪ LEVEL 3 ♪♪♪♪ LEVEL 4 ♪♪♪♪♪ LEVEL 5

RISOTTO OMURICE リゾットオムレツ



SHIMEJI
Rp.59.000



CHICKEN
Rp.69.000



HOKUBEE BEEF
Rp.89.000



SALMON
Rp.89.000

PASTA パスター



AGLIO OLIO CHICKEN
59.000



AGLIO OLIO TUNA
75.000



CARBONARA BACON & EGG
65.000

